



CATALOG 2025

ALVI GROUP

PREMIUM FACADE AND PLASTER PROFILES



ALVIGROUP.COM.UA
ALVI-GROUP@UKR.NET
+38067 324 59 59



5 MOLODIZHNA STREET,
PETROPAVLIVSKE,
KYIV REGION, 08341



Contents

About company ALVI GROUP	01
CORNER BEAD	02
PERFORATED PLASTIC CORNER BEAD	03
PERFORATED PLASTIC CORNER WITH A MESH	03
PERFORATED ALUMINIUM CORNER BEAD	04
PERFORATED ALUMINIUM CORNER BEAD WITH A MESH	04
FLEXIBLE PERFORATED PLASTIC CORNER BEAD	05
FLEXIBLE PLASTIC CORNER BEAD WITH A MESH	05
PERFORATED PLASTIC ARCH CORNER BEAD	06
PERFORATED PLASTIC ARCH CORNER BEAD WITH A MESH	06
PLASTIC PLASTER CORNER BEAD	07
PLASTER CORNER BEAD WITH POLYMER COATING	07
GALVANIZED PLASTER CORNER BEAD	08
ALUMINIUM CORNER FOR WET PLASTER	08
PLASTIC CORNER WITH A DRIP EDGE	09
PLASTIC CORNER ECO/ECO PLUS WITH A DRIP EDGE	09
PROFILE	10
WINDOW REVEAL PROFILE	11
WINDOW REVEAL PROFILE WITH A MESH	11
PLASTIC WINDOW REVEAL PROFILE WITH A MESH ECO	12
WINDOW REVEAL PROFILE WITH A MESH	12
PLASTIC 'J' PROFILE FOR PLASTERBOAR	13
DRIP BEAD FOR BASE PROFILE	13
STRAIGHT DILATATION PLASTIC PROFILE WITH A MESH (E)	14
PLASTIC DILATATION ANGULAR PROFILE WITH A MESH (V)	14
PLASTIC ELEVATION PROFILE FOR RUSTIC WORKS	15
PLASTIC ELEVATION PROFILE FOR RUSTIC WORKS WITH A MESH ..	15
ALUMINIUM BASE PROFILE	16
UNIVERSAL PLASTIC BASE PROFILE	16
BASE SET	17
SCREED GUIDE	18
GALVANIZED PLASTERING SCREED GUIDE	19
PLASTIC PLASTERING SCREED GUIDE	19
FIBERGLASS MESH	20
FIBREGLASS REINFORCING MESH	21



ALVI GROUP is a Ukrainian manufacturer of high-quality facade and plaster profiles. **Since 2007**, we've specialized in PVC, aluminum, and galvanized steel corner beads and guides, consistently focusing on product quality, innovation, and sustainability.

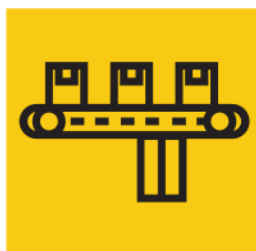
Our 1.7-hectare site includes 1,500 m² of production space and 2,000 m² of warehouses. We operate three dedicated workshops and our own logistics fleet, enabling stable deliveries across Ukraine and Europe.

We supply over **120 product types**, including plaster profiles, guides, and fiberglass mesh. Our clients include retail chains (Epicentr, Nova Linia) and major construction companies in Ukraine, Poland, Romania, Germany, and Moldova.

ALVI GROUP is committed to sustainable production: our facility runs on solar energy and recycles plastic waste into new raw materials.



**Reliable and
timely deliveries**



**Fast production of
custom orders**



**Certified quality
and compliance**



**Competitive prices
directly from the
manufacturer**

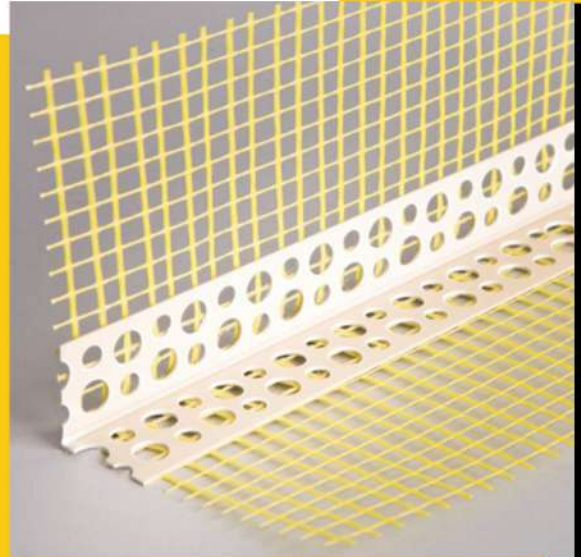
ALVI GROUP CORNER BEADS: PRECISION, DURABILITY, AND AESTHETICS

ALVI GROUP Corner Beads — Precision for Every Edge

Engineered for professionals, **ALVI GROUP** corner beads are designed to reinforce, align, and protect wall edges in plastering and finishing work. Whether you're working indoors or outdoors, our range ensures lasting performance, clean lines, and effortless installation.

Our Range:

- **Galvanized Plaster Beads.** Reinforced steel profiles with zinc coating. Durable and corrosion-resistant — ideal for facades and high-humidity zones.
- **Plastic Plaster Beads.** Lightweight, rustproof, and easy to install. Perfect for interiors. Non-oxidizing material ensures clean finishes with reduced labor.
- **Perforated Beads.** Designed for maximum plaster adhesion and crack prevention. Best for large areas and high-traffic zones.
- **Window Reveal Beads.** Clean transitions between plaster and window frames. Made from UV- and temperature-resistant plastic for long-lasting aesthetics.



Applications. From exterior facades to interior corners, ALVI GROUP corner beads protect edges, prevent cracking, and improve surface alignment. They work seamlessly with modern insulation and plastering systems.

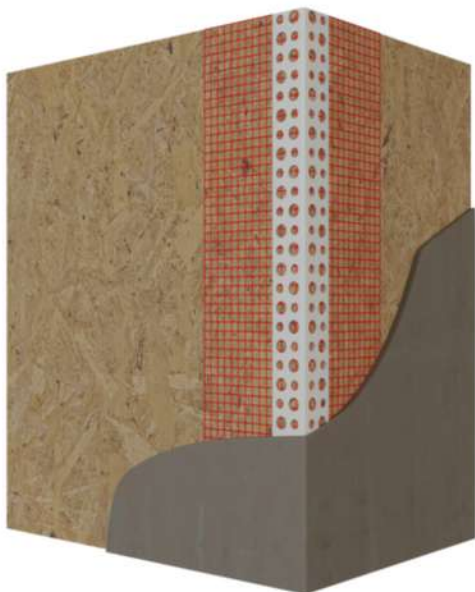
ALVI GROUP
BUILT TO LAST.
FINISHED TO IMPRESS



PERFORATED PLASTIC CORNER BEAD

TECHNICAL CHARACTERISTICS

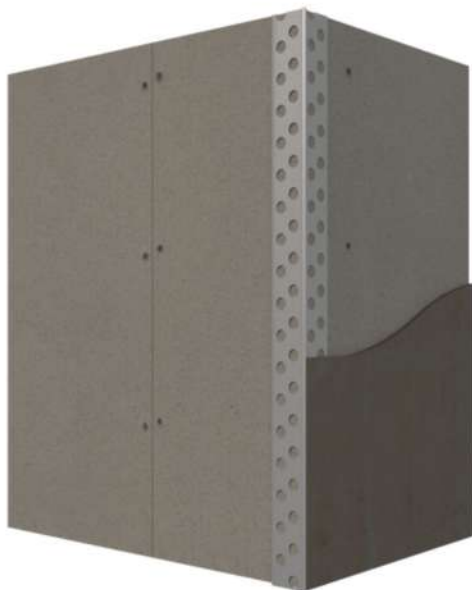
TYPE: _____ PLASTERING
KIND: ____ WITHOUT REINFORCING MESH
MATERIAL: _____ PVC
LENGTH, M: _____ 2.5/2.6/3.0
WIDTH, MM: ____ 70X70, 100X100, 100X150
QUANTITY IN THE PACKAGE, PCS.: ____ 50



PERFORATED PLASTIC CORNER WITH A MESH

TECHNICAL CHARACTERISTICS

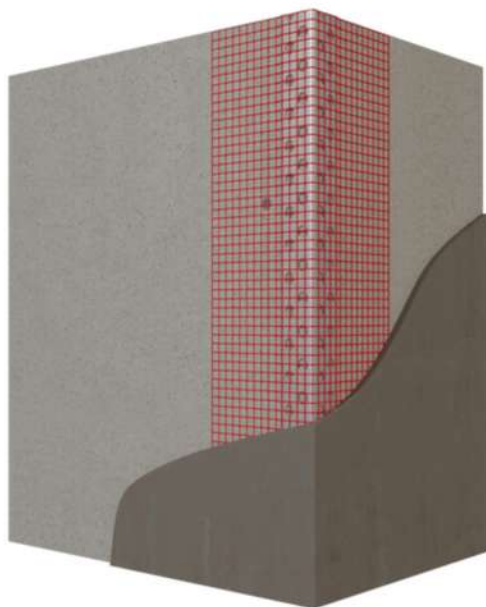
TYPE: _____ PLASTERING
KIND: _____ WITH REINFORCING MESH
MATERIAL: _____ PVC
LENGTH, M: _____ 2.5/2.6/3.0
WIDTH, MM: ____ 70X70, 100X100, 100X150
MESH DENSITY, G/M2: ____ 115-120, 140, 160
QUANTITY IN THE PACKAGE, PCS.: _____ 50



PERFORATED ALUMINIUM CORNER BEAD

TECHNICAL CHARACTERISTICS

TYPE: _____ PERFORATED
KIND: _____ WITHOUT REINFORCING MESH
MATERIAL: _____ ALUMINIUM
LENGTH, M: _____ 2.5/3.0
WIDTH, MM: _ 17X17, 19X19, 20X20, 23X23, 25X25, 30X30
THICKNESS, MM: _____ 0,2, 0,25, 0,3, 0,4
QUANTITY IN THE PACKAGE, PCS.: _____ 100/300



PERFORATED ALUMINIUM CORNER BEAD WITH A MESH

TECHNICAL CHARACTERISTICS

TYPE: _____ PERFORATED
KIND: _____ WITH REINFORCING MESH
MATERIAL: _____ ALUMINIUM
LENGTH, M: _____ 2.5/3.0
WIDTH, MM: ____ 65X65, 70X70, 100X100, 100X150
MESH DENSITY, G/M2: _____ 115-120, 140, 160
QUANTITY IN THE PACKAGE, PCS.: _____ 50



FLEXIBLE PERFORATED PLASTIC CORNER BEAD (over/under 90 degrees)

TECHNICAL CHARACTERISTICS

TYPE: _____ PERFORATED
 KIND: _____ WITHOUT REINFORCING MESH
 MATERIAL: _____ PVC
 LENGTH, M: _____ 2.5/3.0/15
 WIDTH, MM: _____ 23X23
 QUANTITY IN THE PACKAGE, PCS.: _ 50/5 (LENGTH OF 15 M)



FLEXIBLE PLASTIC CORNER BEAD WITH A MESH

TECHNICAL CHARACTERISTICS

TYPE: _____ PERFORATED
 KIND: _____ WITH REINFORCING MESH
 MATERIAL: _____ PVC
 LENGTH, M: _____ 2.5/3.0/15
 WIDTH, MM: _____ 100X100
 QUANTITY IN THE PACKAGE, PCS.: ____ 50



PERFORATED PLASTIC ARCH CORNER BEAD

TECHNICAL CHARACTERISTICS

TYPE: _____ ARCHED
 KIND: _____ WITHOUT REINFORCING MESH
 MATERIAL: _____ PVC
 LENGTH, M: _____ 2.5/3.0
 WIDTH, MM: _____ 23X23
 QUANTITY IN THE PACKAGE, PCS.: _____ 50



PERFORATED PLASTIC ARCH CORNER BEAD WITH A MESH

TECHNICAL CHARACTERISTICS

TYPE: _____ ARCHED
 KIND: _____ WITH REINFORCING MESH
 MATERIAL: _____ PVC
 LENGTH, M: _____ 2.5/3.0/15
 WIDTH, MM: _____ 70X70, 100X100
 QUANTITY IN THE PACKAGE, PCS.: _____ 50



PLASTIC PLASTER CORNER BEAD

TECHNICAL CHARACTERISTICS

TYPE: _____ PLASTERING
KIND: ____ WITHOUT REINFORCING MESH
MATERIAL: _____ PVC
LENGTH, M: _____ 2.5/3.0
WIDTH, MM: _____ 40X40
QUANTITY IN THE PACKAGE, PCS.: ____ 50



PLASTER CORNER BEAD WITH POLYMER COATING FOR WET PLASTER

TECHNICAL CHARACTERISTICS

TYPE: _____ PLASTERING
KIND: _____ WITHOUT REINFORCING MESH
MATERIAL: __ GALVANIZED STEEL WITH POLYMER COATING
LENGTH, M: _____ 2.5/3.0
WIDTH, MM: _____ 36X36, 50X50
QUANTITY IN THE PACKAGE, PCS.: _____ 25



GALVANIZED PLASTER CORNER BEAD

TECHNICAL CHARACTERISTICS

TYPE: _____ PLASTERING
KIND: _____ WITHOUT REINFORCING MESH
MATERIAL: _____ GALVANIZED STEEL
LENGTH, M: _____ 2.5/3.0
WIDTH, MM: _____ 36X36, 50X50
QUANTITY IN THE PACKAGE, PCS.: ____ 25



ALUMINIUM CORNER FOR WET PLASTER

TECHNICAL CHARACTERISTICS

TYPE: _____ PLASTERING
KIND: ____ WITHOUT REINFORCING MESH
MATERIAL: _____ ALUMINIUM
LENGTH, M: _____ 3.0
WIDTH, MM: _____ 36X36, 50X50
QUANTITY IN THE PACKAGE, PCS.: ____ 25



PLASTIC CORNER WITH A DRIP EDGE

TECHNICAL CHARACTERISTICS

TYPE: _____ WITH A DRIP EDGE
KIND: _____ WITH REINFORCING MESH
MATERIAL: _____ PVC
LENGTH, M: _____ 2.5
WIDTH, MM: _____ 100X100
QUANTITY IN THE PACKAGE, PCS.: __ 20



PLASTIC CORNER ECO/ECO PLUS WITH A DRIP EDGE

TECHNICAL CHARACTERISTICS

TYPE: _____ WITH A DRIP EDGE;
 _____ WITHOUT PROTECTIVE FOIL
KIND: _____ WITH REINFORCING MESH
MATERIAL: _____ PVC
LENGTH, M: _____ 2.5
WIDTH, MM: _____ 100X100, 100X150
QUANTITY IN THE PACKAGE, PCS.: __ 20

PROFILE RANGE BY ALVI GROUP

PROFILES THAT PROTECT. QUALITY THAT LASTS

10

ALVI GROUP offers a compact selection of finishing profiles for modern insulation and façade systems. Our lineup includes window reveal profiles, plinth profiles, and mesh-reinforced solutions – built for durability, protection, and clean lines.

Our Range:

Window Reveal Profiles

High-quality PVC profiles for precise, protected window and door edges. They enhance thermal insulation and prevent cracking or moisture ingress.

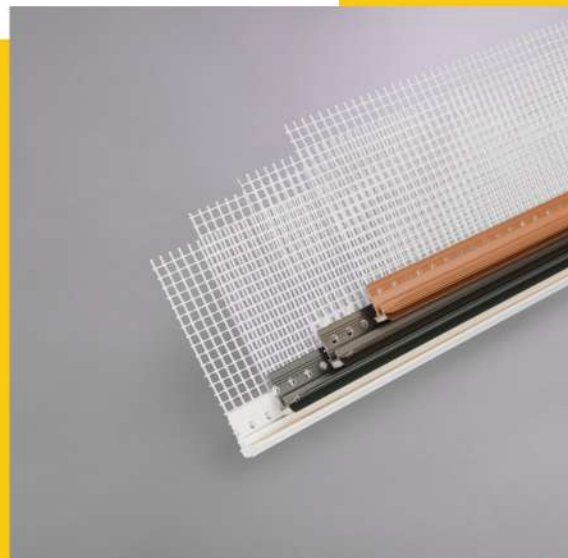
- With Mesh: Stronger adhesion and insect protection.
- Without Mesh: Clean, sealed finish for interiors or dry zones.

Plinth Profiles

Protect facade bases from moisture, temperature shifts, and impact. Ensure a smooth connection between insulation and ground level.

Window Sill Strip with Mesh

Shields the joint between wall and sill. Mesh ensures plaster compatibility and guards against weather and insects.



ALVI GROUP profiles are compatible with all modern EIFS and plastering systems. Choose the right solution for enhanced longevity, energy efficiency, and a perfect finish.

ALVI GROUP

**BUILT TO LAST.
FINISHED TO IMPRESS**

WINDOW REVEAL PROFILE

TECHNICAL CHARACTERISTICS

TYPE: _____ FOR A WINDOW
KIND: _____ WITHOUT REINFORCING MESH
MATERIAL: _____ PVC
LENGTH, M: _____ 2.5
WIDTH, MM: _____ 3/6/9
COLOUR: _ WHITE, GRAPHITE, BROWN, GOLDEN OAK
QUANTITY IN THE PACKAGE, PCS.: _____ 40

WINDOW REVEAL PROFILE WITH A MESH

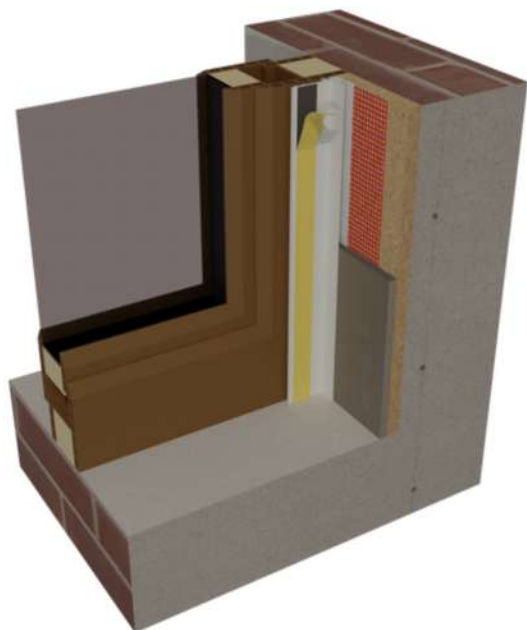
TECHNICAL CHARACTERISTICS

TYPE: _____ FOR A WINDOW
KIND: _____ WITH REINFORCING MESH
MATERIAL: _____ PVC
LENGTH, M: _____ 2.5
WIDTH, MM: _____ 3/6/9
WIDTH OF THE MESH, MM: _____ 100
COLOUR: _ WHITE, GRAPHITE, BROWN, GOLDEN OAK
QUANTITY IN THE PACKAGE, PCS.: _____ 20/25

PLASTIC WINDOW REVEAL PROFILE WITH A MESH ECO

TECHNICAL CHARACTERISTICS

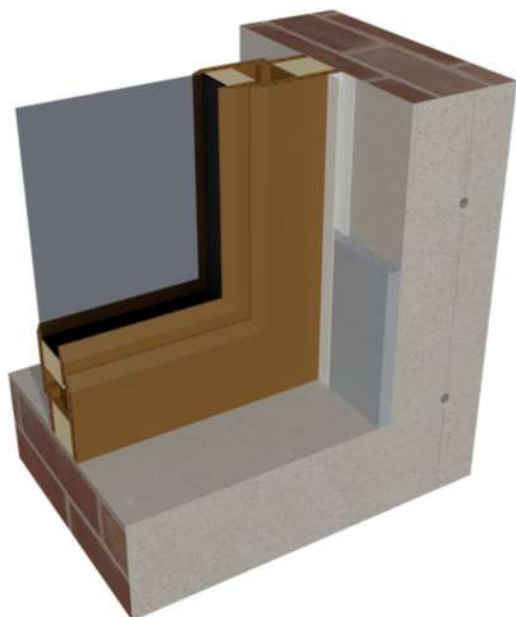
TYPE: _____ FOR A WINDOW
KIND: _____ WITH REINFORCING MESH
MATERIAL: _____ PVC
LENGTH, M: _____ 2.4
WIDTH, MM: _____ 3/6/9
WIDTH OF THE MESH, MM: _____ 100
COLOUR: ____ WHITE, GRAPHITE, BROWN, GOLDEN OAK
QUANTITY IN THE PACKAGE, PCS.: _____ 20



WINDOW REVEAL PROFILE WITH A MESH

TECHNICAL CHARACTERISTICS

TYPE: _____ FOR A WINDOW
KIND: _____ WITH SELF-ADHESIVE TAPE
MATERIAL: _____ PVC
LENGTH, M: _____ 2.5
QUANTITY IN THE PACKAGE, PCS.: _____ 50





PLASTIC 'J' PROFILE FOR PLASTERBOARD

TECHNICAL CHARACTERISTICS

TYPE: _____ EDGE TRIM PROFILE
KIND: _____ WITHOUT MESH
MATERIAL: _____ PVC
LENGTH, M: _____ 2.5/3.0
HEIGHT, MM: _____ 12.5
QUANTITY IN THE PACKAGE, PCS.: ____ 50



DRIP BEAD FOR BASE PROFILE

TECHNICAL CHARACTERISTICS

TYPE: _____ SEPARATING
KIND: _____ WITH REINFORCING MESH
MATERIAL: _____ PVC
LENGTH, M: _____ 2.0
HEIGHT, MM: _____ 3, 6
QUANTITY IN THE PACKAGE, PCS.: ____ 25

STRAIGHT DILATATION PLASTIC PROFILE WITH A MESH (E)

TECHNICAL CHARACTERISTICS

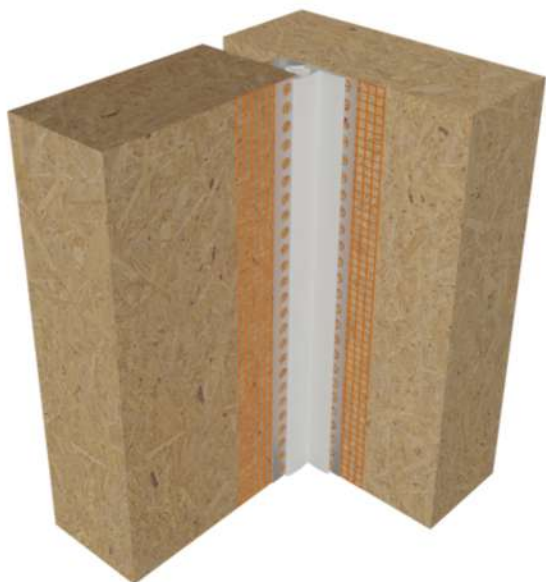
TYPE: _____ DILATATIONAL
KIND: _____ WITH REINFORCING MESH
AND ELASTIC MEMBRANE
MATERIAL: _____ PVC
LENGTH, M: _____ 2.0
WIDTH OF THE ELASTIC MEMBRANE, MM: ____ 40
WIDTH, MM: _____ 100X100
QUANTITY IN THE PACKAGE, PCS.: _____ 20



PLASTIC DILATATION ANGULAR PROFILE WITH A MESH (V)

TECHNICAL CHARACTERISTICS

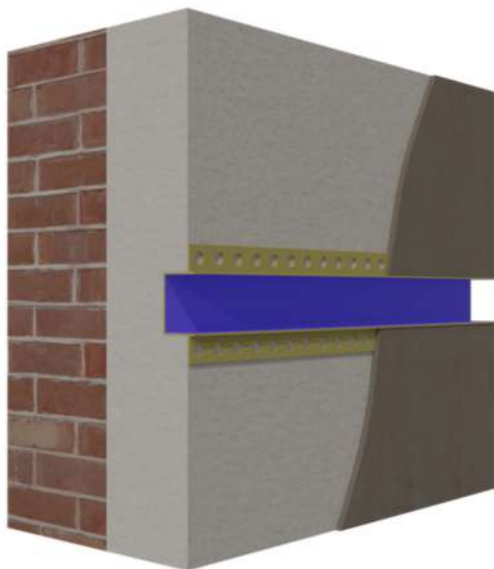
TYPE OF ANGLE: _____ DILATATIONAL
KIND: _____ WITH REINFORCING MESH
AND ELASTIC MEMBRANE
MATERIAL: _____ PVC
LENGTH, M: _____ 2.0
WIDTH OF THE ELASTIC MEMBRANE, MM: ____ 40
WIDTH, MM: _____ 100X100
QUANTITY IN THE PACKAGE, PCS.: _____ 20



PLASTIC ELEVATION PROFILE FOR RUSTIC WORKS

TECHNICAL CHARACTERISTICS

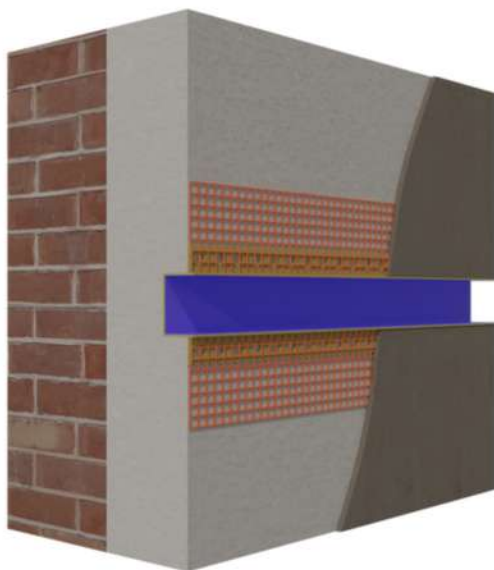
TYPE: _____ FOR RUSTICATION
 KIND: _____ WITHOUT MESH
 MATERIAL: _____ PVC
 LENGTH, M: _____ 3.0
 WIDTH OF THE GROOVE, MM: __ 20/20, 30/20, 50/20
 QUANTITY IN THE PACKAGE, PCS.: _____ 48/ 30/ 20



PLASTIC ELEVATION PROFILE FOR RUSTIC WORKS WITH A MESH

TECHNICAL CHARACTERISTICS

TYPE: _____ FOR RUSTICATION
 KIND: _____ WITH MESH
 MATERIAL: _____ PVC
 LENGTH, M: _____ 3.0
 WIDTH OF THE GROOVE, MM: __ 20/20, 30/20, 50/20
 WIDTH OF THE MESH, MM: _____ 100/100
 QUANTITY IN THE PACKAGE, PCS.: _____ 48/ 30/ 20



ALUMINIUM BASE PROFILE

TECHNICAL CHARACTERISTICS

TYPE: _____ BASE PROFILE

MATERIAL: _____ ALUMINIUM

LENGTH, M: _____ 2.5

WIDTH, MM: _____ 53/103/123/153

QUANTITY IN THE PACKAGE, PCS.: __ 20/10



UNIVERSAL PLASTIC BASE PROFILE

TECHNICAL CHARACTERISTICS

TYPE OF PROFILE: _____ BASE PROFILE

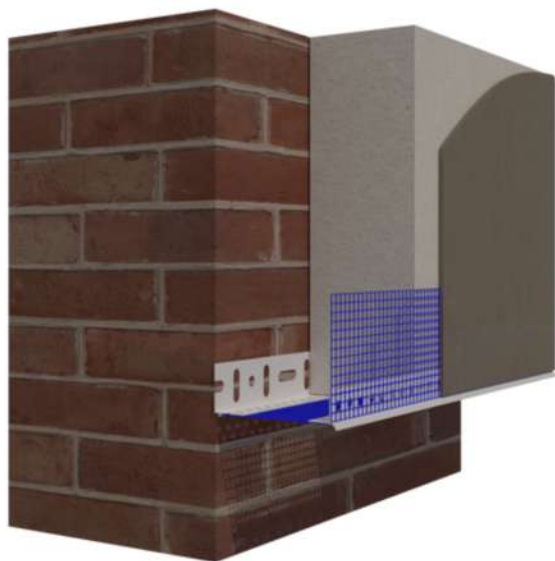
MATERIAL: _____ PVC

LENGTH, M: _____ 2.5

WIDTH, MM: _____ 39X43

QUANTITY IN THE PACKAGE, PCS.: __ 10





BASE SET

TECHNICAL CHARACTERISTICS

TYPE: _____ FOR A BASE

KIND OF ANGLE: __ WITH REINFORCING MESH

MATERIAL: _____ PVC

LENGTH, M: _____ 2.5

QUANTITY IN THE PACKAGE, PCS.: _____ 20

BASE SET BY ALVI GROUP

EFFICIENT PROTECTION FOR FACADE BASES

THE BASE SET INCLUDES:

- PLASTIC BASE PROFILE FOR MOISTURE AND IMPACT PROTECTION;
- PLASTIC CORNER WITH A DRIP EDGE FOR STRONG, CLEAN ANGLES.

MADE FROM UV- AND CORROSION-RESISTANT MATERIALS, IT IMPROVES INSULATION AND SPEEDS UP INSTALLATION.

A RELIABLE CHOICE FOR ALL TYPES OF BUILDINGS

PLASTERING BEACONS & SCREED GUIDES BY ALVI GROUP. GUIDE YOUR WORK TO PERFECTION.

Precision Tools for Perfectly Aligned Surfaces

ALVI GROUP offers durable and easy-to-use screed guides and plastering beacons essential for wall and ceiling leveling.

- **Screed Guide** – Ensures flat, level plaster surfaces in both interior and exterior work. Made from rigid, corrosion-resistant materials for long service life.
- **Plastering Beacon** – Acts as a reference point for plaster thickness and shape. Available in metal or plastic, suitable for various site conditions.

Key Advantages:

- ✓ Accurate surface alignment
- ✓ Easy installation
- ✓ Reduced labor time and material waste
- ✓ Suitable for large-scale and detailed finishing work

ALVI GROUP – for flawless walls made easy.



ALVI GROUP plastering beacons and screed guides deliver precise alignment and easy installation. Durable and corrosion-resistant, they ensure smooth, even finishes for professional plastering projects.

ALVI GROUP
BUILT TO LAST.
FINISHED TO IMPRESS



GALVANIZED PLASTERING SCREED GUIDE

TECHNICAL CHARACTERISTICS

TYPE: _____ PLASTERING
MATERIAL: _____ GALVANIZED STEEL
LENGTH, M: _____ 2.5, 3.0
WIDTH, MM: _____ 6, 10
QUANTITY IN THE PACKAGE, PCS.: _____ 25



PLASTIC PLASTERING SCREED GUIDE

TECHNICAL CHARACTERISTICS

TYPE: _____ PLASTERING
MATERIAL: _____ PVC
LENGTH, M: _____ 2.5, 3.0
WIDTH, MM: _____ 6, 10
QUANTITY IN THE PACKAGE, PCS.: _____ 25

FIBERGLASS MESH BY ALVI GROUP. RELIABLE REINFORCEMENT FOR MODERN CONSTRUCTION

20

ALVI GROUP fiberglass mesh is designed to strengthen plaster layers, prevent cracking, and improve surface durability in both exterior and interior applications. **Made from high-strength, corrosion-resistant fiberglass**, the mesh distributes stress evenly and enhances adhesion between plaster and substrates.

Ideal for ETICS systems, wall and ceiling reinforcement, and high-stress areas like corners and joints, this mesh ensures long-lasting protection and aesthetic appeal. Lightweight and easy to install, it pairs perfectly with sealing profiles, corner beads, screed guides, and expansion profiles for a complete finishing system.

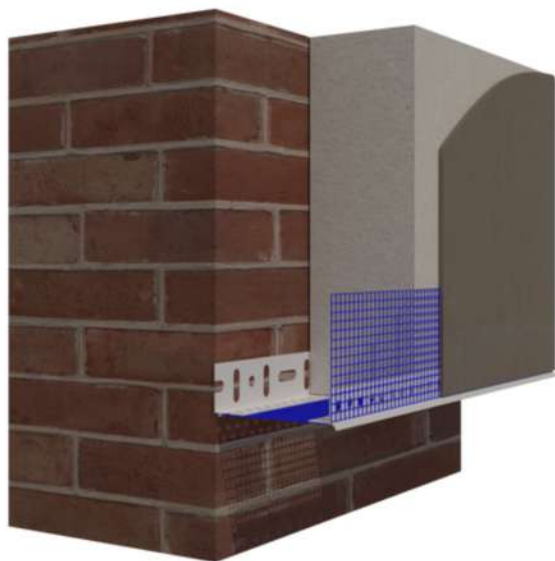
Choose ALVI GROUP – your trusted solution for surface strength and stability.



Combined with sealing profiles, corner expansion profiles, guide beads, and plaster corner beads, fiberglass mesh helps ensure high-quality finishes and long-lasting structural performance.

ALVI GROUP

**BUILT TO LAST.
FINISHED TO IMPRESS**



FIBREGLASS REINFORCING MESH

TECHNICAL CHARACTERISTICS

WIDTH, CM: _____ 10, 12.5, 14, 20, 25, 100

LENGTH, M: _____ 50, 100-300

DENSITY, G/M²: _____ 115-120, 140, 160

QUANTITY IN THE PACKAGE, PCS.: _ 30-34 (50 M₂)

WHAT IS FIBERGLASS REINFORCING MESH?

FIBERGLASS REINFORCING MESH IS A SPECIALIZED MATERIAL MADE FROM STRONG FIBERGLASS, USED TO REINFORCE PLASTER LAYERS IN BOTH FACADE AND INTERIOR FINISHING. THANKS TO ITS PROPERTIES, THE MESH DISTRIBUTES LOADS EVENLY ACROSS THE SURFACE, PREVENTING CRACKS CAUSED BY BUILDING SHRINKAGE, TEMPERATURE FLUCTUATIONS, OR OTHER EXTERNAL IMPACTS.

FIBERGLASS MESH BY ALVI GROUP. RELIABLE REINFORCEMENT FOR MODERN CONSTRUCTION

ALVI GROUP fiberglass mesh is designed to strengthen plaster layers, prevent cracking, and improve surface durability in both exterior and interior applications. **Made from high-strength, corrosion-resistant fiberglass**, the mesh distributes stress evenly and enhances adhesion between plaster and substrates.

Ideal for ETICS systems, wall and ceiling reinforcement, and high-stress areas like corners and joints, this mesh ensures long-lasting protection and aesthetic appeal. Lightweight and easy to install, it pairs perfectly with sealing profiles, corner beads, screed guides, and expansion profiles for a complete finishing system.

Choose ALVI GROUP – your trusted solution for surface strength and stability.



Combined with sealing profiles, corner expansion profiles, guide beads, and plaster corner beads, fiberglass mesh helps ensure high-quality finishes and long-lasting structural performance.

ALVI GROUP
BUILT TO LAST.
FINISHED TO IMPRESS

**MEASURE SUCCESS.
BUILD WITH PRECISION.**



**Kyiv region, Boryspil
district, Petropavlivske
village, str. Molodizhna, 5**



+38 067 324 59 59



alvi-group@ukr.net

